



# AI in Formula One.

Exploring Use Cases For

# Race / Performance Engineers

*This content is an independent discussion of AI in motorsports engineering and is not affiliated with Formula One, FIA, or any specific team.*

# Enhancing Real-Time Decisions

## Why It Matters

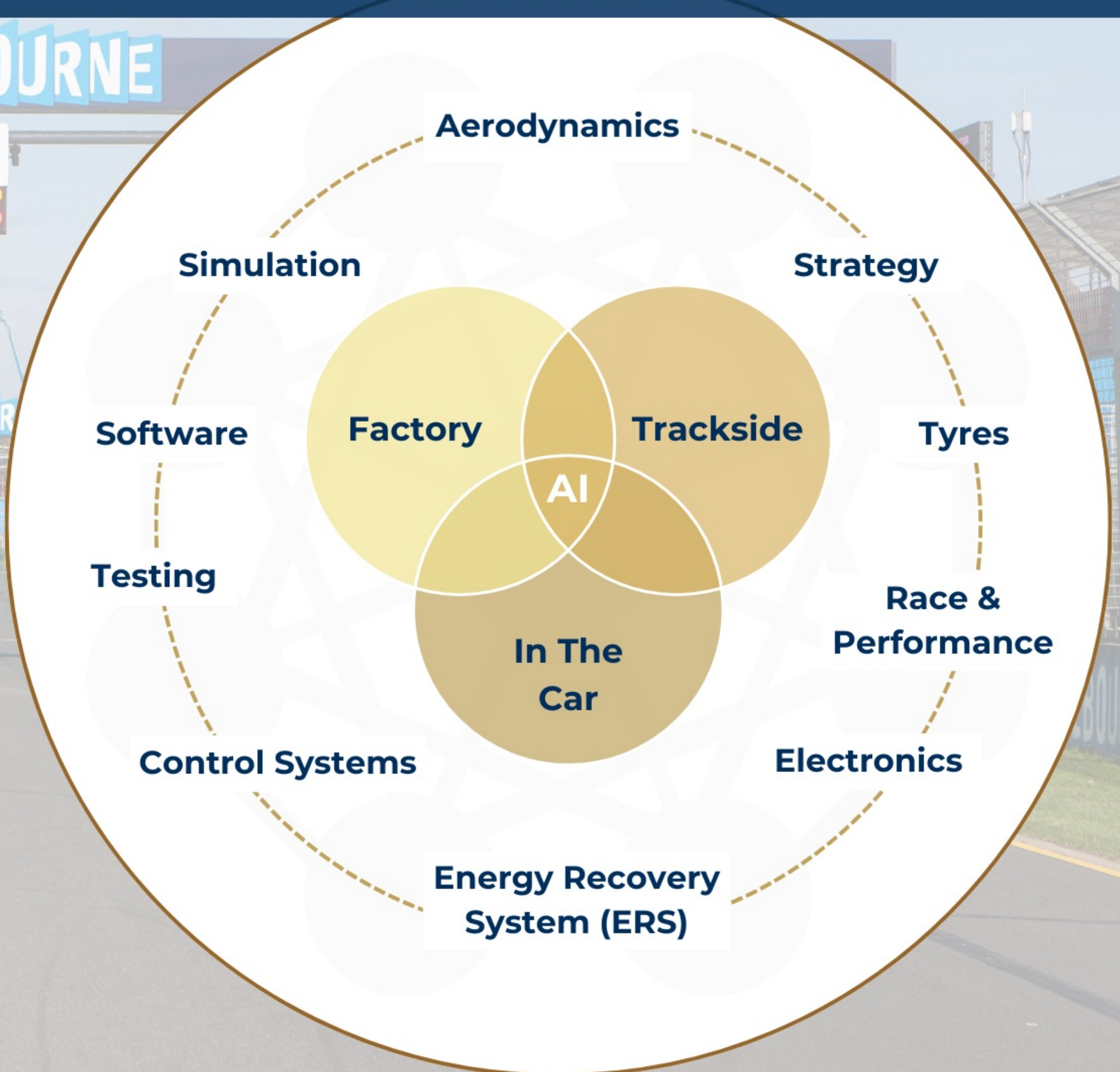
Race and trackside engineers process vast amounts of live telemetry, making split-second adjustments to maximise performance.

AI provides decision-support tools that help engineers interpret data faster.

## **AI-based Engineering Technology**

- ✓ Monitors real-time telemetry and delivers racing line optimisation opportunities.
- ✓ Provides predictive alerts on tyre degradation, fuel usage, and ERS deployment.
- ✓ Refines setup adjustments based on track evolution data.

# The Future of Racing: Streamlined with AI.



**Aerodynamics**

**Simulation**

**Strategy**

**Software**

**Factory**

**Trackside**

**Tyres**

**AI**

**Testing**

**Race &**

**Performance**

**In The  
Car**

**Control Systems**

**Electronics**

**Energy Recovery  
System (ERS)**

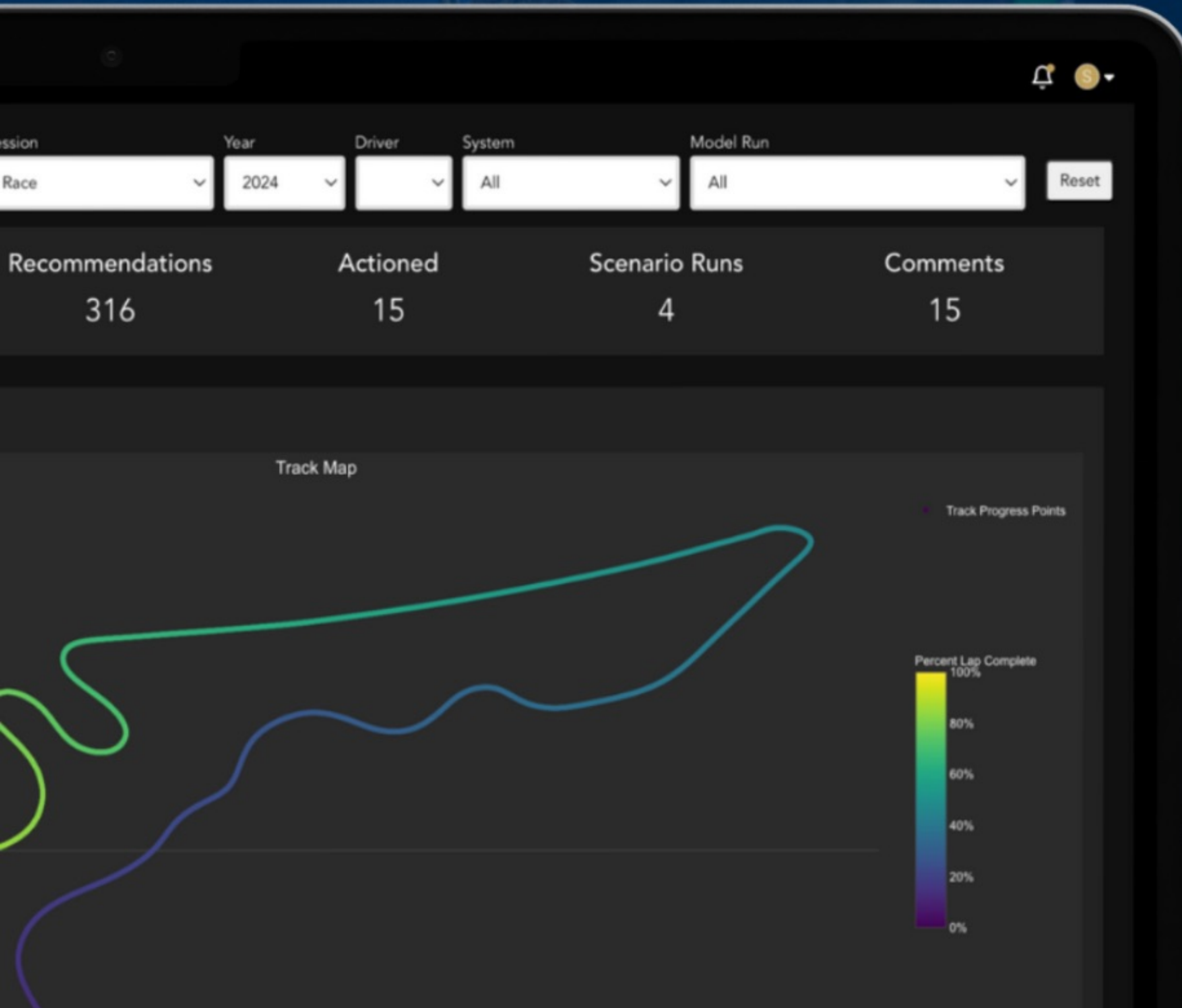
AI in Formula One.

Exploring Use Cases For Race / Performance Engineers

# Potential Applications for Race / Performance Engineers

## Racing Line Optimisation

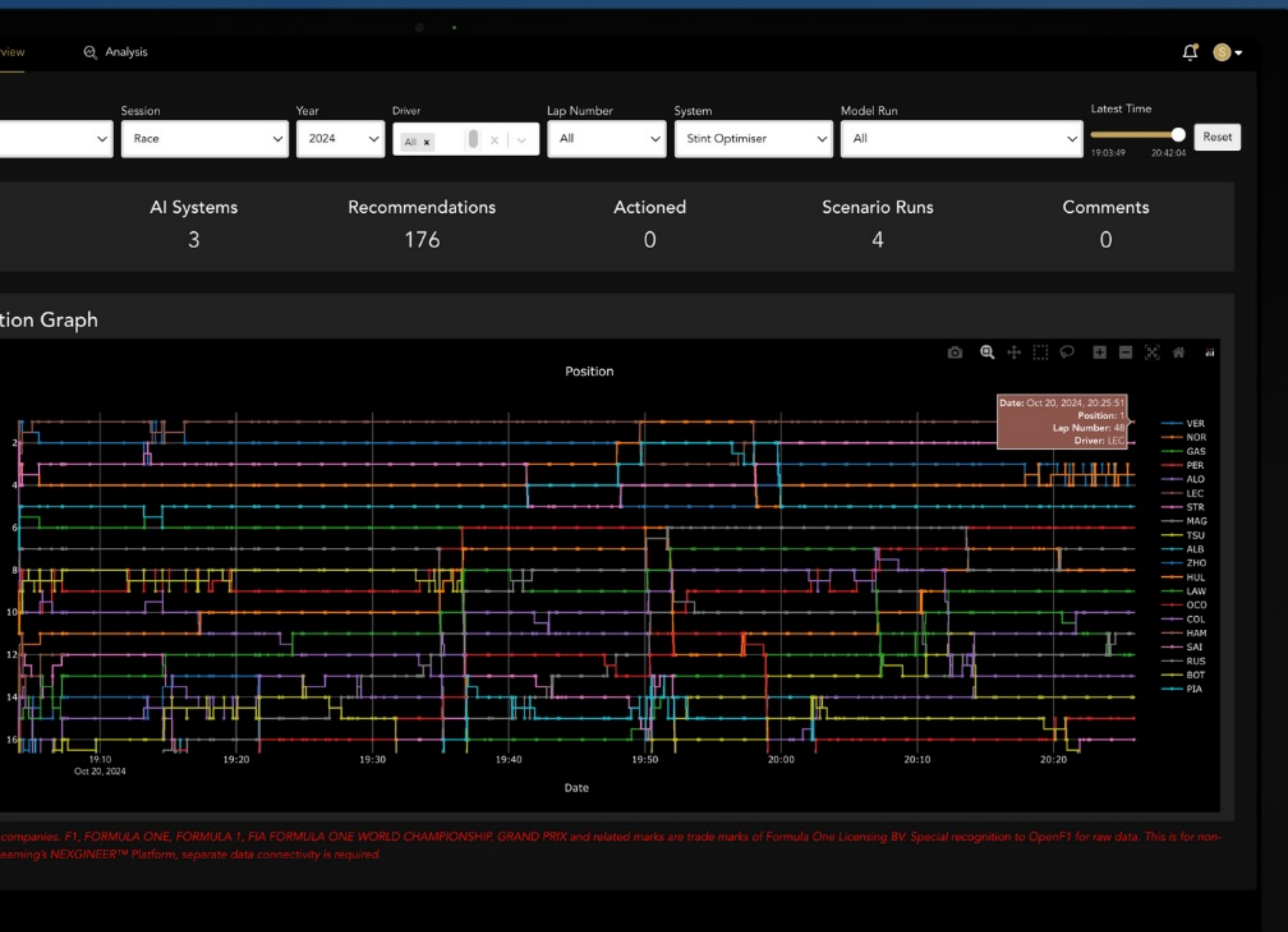
Flag potential opportunities to optimise individual driver racing line and braking zone characteristics.



# Live energy management optimisation

AI assists in adjusting deployment strategy during the race.

# AI in Formula One. Exploring Use Cases For Race / Performance Engineers



## Competitor performance forecasting

Model how rival teams are likely to react during the race.

## AI isn't replacing expertise - it's enhancing it.

To discuss one or more of these  
AI use cases, contact us today.



[hello@sigmachinelearning.com](mailto:hello@sigmachinelearning.com)



[sigmachinelearning.com](https://sigmachinelearning.com)

Download your **FREE**  
copy of the full  
***AI in Formula One Guide***  
via the link in the caption.

